

MAMMOET

45 years of innovation



MAMMOET

1966

1967

1968

1969

1970



Gottwald MK-200



Gottwald MK-75



Gottwald MK-75



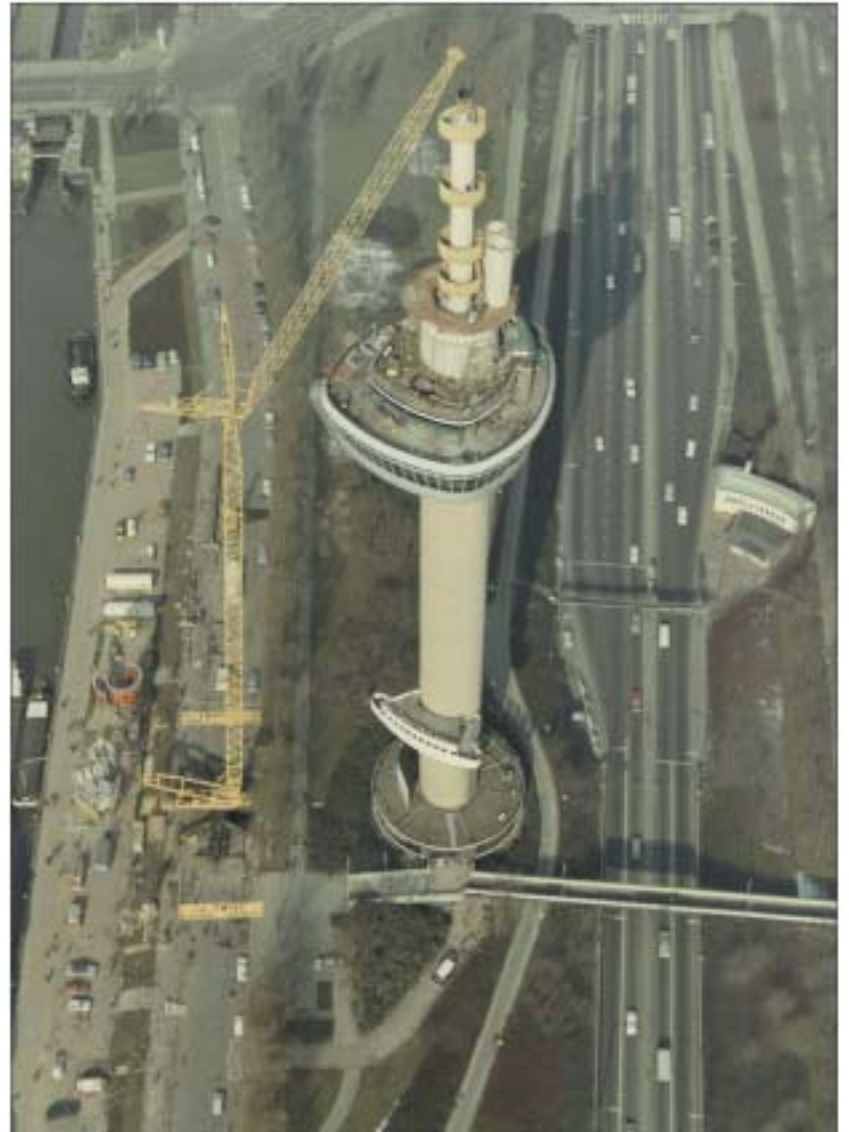
Grove TM-550



Demag TC-140



Demag TC-400



Gottwald MK-500

CRANE INNOVATIONS

1966	SECOND LARGEST MOBILE IN THE NETHERLANDS Gottwald MK-200 (120t / 700tm). One of the strongest cranes in the Netherlands and built in 1964. Only surpassed by the 165t Gottwald MK-250 of Van Twist, which would also join the Mammoet fleet in 1979.	120t MOBILE
1966	MOBILE CONVERTED INTO TRUCK Gottwald MK-75 (60t / 250tm). The upperworks of the mobile MK-75 were transferred onto a 4-axle Vomag truck carrier.	60t TRUCK
1967	LARGEST TELESCOPIC TRUCK IN THE NETHERLANDS Grove TM-550 (55t / 195 tm). One of the larger telescopic cranes on the market and the largest in the Netherlands with 32m main boom and 13m jib.	55t TELESCOPIC TRUCK
1968	COMPACT TRUCK WITH LONG BOOM Demag TC-400 (100t / 480tm). Truck crane with a maximum combined boom length of 102m, an ideal machine for the erection of electricity pylons.	100t TRUCK

TRANSPORT INNOVATION

MODULAR TRAILER

Dralze. First modular trailer on the market. Axle spacing 1.1m, width 2.8m and height 1.22m + 0.25/-0.1m.



TRANSPORT INNOVATION

BOOM TRAILER

DRACO. Towed trailers for the three Demag TC-140s, carrying 4 pc. 6m boom sections and large hookblock.



DID YOU KNOW?

EASY MONEY

The design of the 3 Demag TC-140s of Van Seumeren was based upon draglines. Therefore they were excellent machines for pouring concrete. The rate was a very lucrative Dfl. 10,- per m3.

DID YOU KNOW?

EUROMAST

The Euromast, Rotterdam's most famous landmark, was extended using the 350t Gottwald MK-500 of Van Twist. In 1979 the 8-axle mobile crane would join the Mammoet fleet.

1971

1972

1973

1974

1975



Grove TM-600



Demag TC-1200



Gottwald MK-650



P&H 5300-R



Liebherr LG-1280



American 11260

CRANE INNOVATIONS

1971	LARGEST TELESCOPIC TRUCK IN THE NETHERLANDS Grove TM-600 (72t / 269tm). Strongest telescopic truck crane in the Netherlands on a futuristic looking CD 6-axle carrier. 34.7m main boom and 18.3m jib.	72t TELESCOPIC TRUCK
1972	LARGEST MOBILE IN THE NETHERLANDS Gottwald MK-650 (500t / 3250 tm). Largest mobile crane in the Netherlands with a combined boom length of 162m, nicknamed "Calimero". The crane was moved using two 4 axle Scheuerle dollies.	500t MOBILE
1973	COMPACT TRUCK WITH X-OUTRIGGERS Demag TC-1200 (250t / 1600tm). First of three very compact truck cranes on 7-axle Faun carrier. This very successful machine would evolve into the present day TC-2800-1.	250t TRUCK
1973	LARGEST CRAWLER IN THE NETHERLANDS P&H 5300-R (270t / 1500tm). Bought from well known dealer Gleason (USA), this was the largest crawler in the Netherlands. Only used at IJmuiden Steelworks for 2 years.	270t CRAWLER
1974	TRUCK WITH 6 OUTRIGGERS Liebherr LG-1280 (280t / 2000tm). Liebherr's first big truck crane with it's striking 6 outriggers. Combined boom length 161m. Like the TC-1200 the LG would be the ancestor of a whole new line of 8-axle truck cranes.	280t TRUCK



SERVICE INNOVATION

DOOR-TO-DOOR

Land- and sea transport from door to door.

EQUIPMENT INNOVATION

AIR CUSHIONS

Air cushions, used for the transport of dredgers. This method is still used today.



DID YOU KNOW?

THINKING BIG

Stoof and Van Seumeren investigated employing a 600t crane as a JV, the largest mobile in the world. The crane would cost Dfl. 3,000,000. Day rate would be Dfl 6,000. In 1972 Stoof buys a 500t Gottwald MK-650 and in 1973 Van Seumeren adds a Demag 250t TC-1200.

DID YOU KNOW?

INSPIRED BY A HORSE

Founder Jan van Seumeren got inspired by a rare American 11260 with Sky-Horse attachment from Chemiek Zavody. Together with Demag this resulted in the Super-Lift for the TC-1200.

1976

1977

1978

1979

1980



Demag TC-1200 Super-Lift



Manitowoc 4100-W Ringer



Manitowoc 4600-S-4 Ringer



Gottwald AMK-125-63



Liebherr LT-1200



Krupp-Ardelt 75-GMT

CRANE INNOVATIONS

1976	LOAD MOMENT ENHANCING ATTACHMENT	SUPER-LIFT
Demag TC-1200 Super-Lift (250-350t / 3300 tm). Revolutionary capacity / load moment enhancing attachment using additional floating counterweight. Developed in close cooperation between Van Seumeren and Demag. Mainboom duties improve by 40% and load moment by 100%. The strongest crane on the Dutch market.		
1976	LARGEST TELESCOPIC TRUCK IN THE NETHERLANDS	125t TELESCOPIC TRUCK
Gottwald AMK-125-63 (125t / 440 tm). Placed on a 6-axle Faun carrier, this was the largest telescopic crane in the Netherlands with its long 76.5m boom length (48.5 main and 28m jib).		
1977	ONE OF THE FIRST RINGERS OUTSIDE THE USA	320t RINGER
Manitowoc 4100-W Ringer (320t / 3000tm). Walter Wright Mammoet bought as one of the first non-US-companies a Manitowoc Ringer. Using a 11m ring, lifting capacity increased with 75% compared to the base crane, a 180t crawler.		
1980	LARGEST RINGER ON THE MARKET	540t RINGER
Manitowoc 4600-S-4 Ringer-S-3 (540t / 12400tm). Using a 18.3m ring maximum capacity but especially loadmoment increased dramatically compared to the 320t crawler base crane.		
1980	LARGEST TELESCOPIC TRUCK IN THE NETHERLANDS	200t TELESCOPIC TRUCK
Liebherr LT-1200 (200t / 744tm). 8-axle truck crane with record braking 55m main boom and 38m jib, the ideal crane for the erection of tower cranes.		



SERVICE INNOVATION

WEIGHING SYSTEM

Weighing system to determine weight and center of gravity.

JACKING INNOVATION

HYDRA-JACK

Lifting system consisting of 20 units with a capacity of 650t (13000t total capacity). The cables consist of cylinders that are screwed together.



DID YOU KNOW?

OLD ACQUAINTANCE

Van Seumeren adds a 4 year old 75t Krupp-Ardelt 75-GMT telescopic truck crane to its fleet, previously owned by Mammoet Stool.

DID YOU KNOW?

WHAT'S IN A NAME

The roots of capacity and/or load moment enhancing attachments can be found in the USA: American "Sky-Horse" and Manitowoc "Ringer". Eventually many other crane manufacturers followed with names as Super-Lift, Maxi-Lift, Ring-Lift, Super Heavy Lift, Derrick, etc.

1981

1982

1983

1984

1985



Liebherr LG-1400 Derrick



Liebherr LT-1300 Derrick



Demag TC-3000



Demag TC-3000

CRANE INNOVATIONS

1983	LOAD MOMENT ENHANCING ATTACHMENT Liebherr LG-1400 Derrick (400-750t / 4500tm). Additional floating counterweight to increase both mainboom and luffing jib duties. Big brother of the LG-1200.	DERRICK
1984	LARGEST TELESCOPIC WITH DERRICK/SPANN-LIFT Liebherr LT-1300 Derrick (300t / 1360tm). Largest telescopic crane that can travel with complete 55m main boom. The crane could be equipped with 56m jib and a Derrick system using suspended ballast, thus reaching into the 400t class. A different version using a Spann-Lift system was available in 1985, compensating for the deflection of the boom.	300t TELESCOPIC TRUCK
1985	COMPACT TRUCK CRANE IN 800T CLASS Demag TC-3000 (500-800t / 4900tm). Very compact 7-axle truck crane with full options and TC-4000 mainboom. Big brother of the TC-1200.	500/800t TRUCK

TRANSPORT INNOVATION



SPMT

Self Propelled Modular Transporter. Containerized platform trailers with 30t / axle line payload developed in close cooperation between Mammoet and Scheuerle. SPMTs have almost unlimited coupling and steering options.

TRANSPORT INNOVATION

BALLAST TRAILER

A.k.a "High-6". Specially designed 6-axle flatbed trailer for the transport of counterweight for large telescopic cranes, reducing the number of supporting trailers. Developed in close cooperation between van Seumeren and Nootboom.



DID YOU KNOW?

EIFFEL TOWER

As a response to Holland's well known logistics company "Van Gend & Loos", Mammoet actually proved that Paris' most famous landmark, the 7175t Eiffel Tower, could be moved using their SPMT trailers. Total weight including supports and trailers would be 8794t, divided over 1152 wheels. Maximum speed 2 km/h.

DID YOU KNOW?

5 YEARS AHEAD

When a steam generator inside a nuclear power plant has to be replaced, it is not unusual to start detailed engineering 5 years ahead of the actual operation.

1986

1987

1988

1989

1990



Gottwald AK-912-GT



Gottwald AK-912-GT



Liebherr LTM-1400



Demag CC-1200-Q



Demag TC-2500



Gottwald MK-550

CRANE INNOVATIONS

1986	LARGEST TRUCK ON SINGLE CARRIER Gottwald AK-912-GT (900-1200t / 14000km). World's largest truck crane with a single carrier. To remain within 12t/axle the rear part of the upper works was transported separately. The crane was operated together with Al-Jaber.	900/1200t TRUCK
1987	HARBOUR CRANE ON CRAWLERS Demag CC-1200-Q (70t / 936tm). Unique crawler harbour crane, based on the 250t CC-1200, used in the Port of Harlingen, Netherlands.	Q CRANE
1988	LARGEST TELESCOPIC WITH SPANN-LIFT Liebherr LTM-1400 (400t / 1344tm). Largest telescopic all-terrain crane that can travel with complete 50m mainboom. Maximum 125t ballast and 84m luffing jib. At first, the Spann-Lift was for main boom only, but in 1990 it became available in combination with the jib as well.	400t TELESCOPIC ALL-TERRAIN
1989	OFFSHORE APPLICATION Demag TC-2500 (400-600t / 3864tm). Upperworks mounted on Seafox offshore platform.	OFFSHORE PEDESTAL



SERVICE INNOVATION

NUCLEAR

The replacement of steam generators in nuclear plants during shut-down.

SERVICE INNOVATION

HEAVY LIFT TERMINAL

Heavy Lift Terminal at Sluiskil with Liebherr 900-L harbour crane.



DID YOU KNOW?

GRANDFATHER

17 years after Stof, Van Seumeren also acquires a 500t Gottwald (nicknamed the "Olympia Kran"), previously owned by Schmitzbauer. This German crane rental company did not have a job for the crane anymore. First job in Van Seumeren colours... In Germany. Because of its experience the crane was nicknamed "Opa", which is Dutch for grandfather.

DID YOU KNOW?

TOO LATE

It is not exactly a public secret that transport activities usually start early. With the film crew arriving late, the load-out had already been completed. Slightly disappointed, they suggested that the trailers would reverse to repeat the exercise. An interesting conversation was the direct result...



Demag PC/CC-4200



Demag PC/CC-4200



MDC-3500



Demag CC-4800



Demag AC-1600

CRANE INNOVATIONS

1991	PEDESTAL AND/OR CRAWLER Demag PC/CC-4200 (650-1250t / 9100tm). Easy transportable pedestal and/or crawler crane. Crane could move around site fully assembled and use outriggers for improved stability.	650/1250t PEDESTAL/CRAWLER
1991	MOBILE DERRICK CRANE MDC-3500 (500/850t / 5100tm). Mobile Derrick Crane 3500. Completely overhauled and upgraded Gottwald AK-350/270-83 with innovative foldable SL-backmast which could be transported on one semi trailer.	500/850t TRUCK
1992	4 GIANT EASTERN EUROPEAN CRAWLERS Demag CC-4800 (800-1600t / 11800-15750tm). 4x giant Demag CC-4800 from Russia and Czechoslovakia that would lead to the PTC concept.	800/1600t CRAWLERS
1992	LARGEST TELESCOPIC ROADABLE WITH MAIN BOOM Demag AC-1600 (500t / 1719tm). Largest telescopic all-terrain crane that can travel with complete 50m main boom. Maximum 140t ballast and 90m luffing job.	500t TELESCOPIC ALL-TERRAIN



SERVICE INNOVATION

BPS

Bundel Pulling System. Device suspended from a crane to pull and push horizontal tube bundles. Used in petrochem.

EQUIPMENT INNOVATION

"DRACULA"

Containerized 600t tail frame, nicknamed "Dracula". The frame was mounted on SPMT trailers and connected to the skirt of the vessel, eliminating the need for a tailing crane.



DID YOU KNOW?

AC-1600 TO THE TEST

Although an unlikely lift in daily practice Mammoets 500t tele, the Demag AC-1600, was tested with 500t plus as per specific order of Aboma-Kebocma.

DID YOU KNOW?

WE'VE GOT ONE AS WELL

After Mammoet received it's Demag AC-1600, Seu-M-imo also got their 500t Demag in its striking orange-white delivery. Seu-M-imo was a JV between Van Seumeren and IMO from East Germany.



Manitowoc M-1200-R



VSSP2



Manitowoc M-1200-R

CRANE INNOVATIONS

1993	LARGEST RINGER Manitowoc M-1200-R (1300t / 23800cm). World's largest ringer crane. 270t Manitowoc M-250-W converted into 1300t M-1200-R using double wide main boom and fixed jib. Crane can be moved, partially rigged, using a M-250-W crawler base.	1300t RINGER
1993	VAN SEUMEREN SPECIAL PRODUCTS 2 Van Seumeren Special Products 2. Self propelled ballast carrier for Super-Lift counterweight of Demag CC-2000 and PC/CC-4200.	VSSP 2
1994	VAN SEUMEREN CRANE MAST Concept Study with Huisman and Demag: Van Seumeren Crane Mast. Demag CC-4800 converted into mast system, capacity 3000t.	3000t GANTRY



MARITIME INNOVATION

"FRANS VAN SEUMEREN"

Barge with 300t N.C.K-Rapier OLYMPUS-HLBC-170 ringer crane with a loadmoment of 2475tm.

TRANSPORT INNOVATION

SPMT 2

Self Propelled Modular Transporter. This second generation of SPMT's introduced digital controls.



DID YOU KNOW?

HOW MUCH

Mammoet was about to buy three Manitowoc M-1200-R's. The competition from De Meern also showed interest, but eventually decided to build their own ringer crane, the TwinRing.

DID YOU KNOW?

BEST OF BOTH WORLDS

The eternal search for more capacity resulted in many concept studies combining cranes and gantries. Although feasible, an even bigger crane was usually the result.



Demag CC-12000



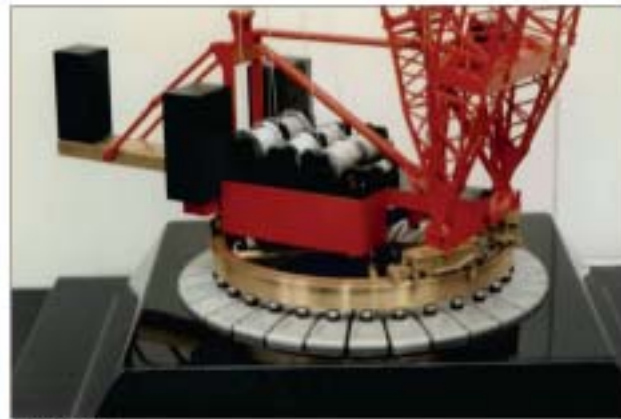
Demag CC-4800



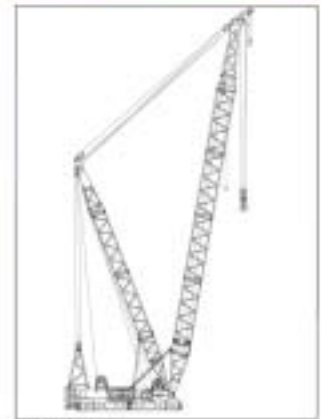
4800 TwinRing LD



Gottwald AK-1200



MMRC-50000



Rambiz Ring

CRANE INNOVATIONS

1995	LARGEST SINGLE BODY CRAWLER Demag CC-12000 (2000-3000t / 42000tm). World's largest single body crawler crane. 950t with 72m main boom + 42m fixed jib at 43m radius, purpose built in 1987 for a nuclear project in Italy. Addition to the Mammoet fleet after JV with Decalift. Also included Gottwald RG-912 and AK-1200.	2000/3000t CRAWLER
1996	TWIN RING CONCEPT 4800 TwinRing LD (1440t / 28800tm). World's largest ringer crane. 800t Demag CC-4800 converted into 1440t 4800 Twin-Ring with A-frame main boom consisting of jib sections (Light Duty). Heavy Duty option for 1600t / 34500tm. Crane can be moved fully rigged using CC-4800 base. Ring could also be used in combination with a ballast carrier. Later renamed T30.	1440/2000t RINGER
1996	LARGEST TRANSPORTABLE SINGLE BODY CRAWLER Demag CC-12600 (1600-2000t / 39500tm). World's largest transportable single body crawler crane. 1600t with 78m main boom at 22m radius. Equipped with double SL carrier with a total weight of 1500t maximum. Longest main boom 138m; longest combined length 240m.	1600/2000t CRAWLER
1996	MOBILE MARINE RINGER CRANES Concept Study: Both Rambiz cranes could be converted into land based 2000-2400t / 45000-50000tm ring cranes, called Mobile Marine Ringer Cranes (in short: MMRC-50000). An option was the "Superfly", a 40m fixed jib attached to 71m luffing jib on top of 117m main boom.	2000/2400t RINGER



MARITIME INNOVATION

"RAMBIZ"

World's largest floating sheerlegs using 2x 2000t A-frame main booms. The barges "Ram" and "Bizon" formed the hull of this catamaran. Especially built for the new Tagus bridge in Portugal transporting and installing 2200t sections.

MARITIME INNOVATION

BALLAST SYSTEM

Containerized ballast system for load-outs and load-ins.



DID YOU KNOW?

CC-11600

Several manufacturers were invited to bid for a new super crane. Demag RL-35000 and RL-40000, 1500t Ring-Lift cranes with 35,000 and 40,000 tm loadmoment. Liebherr LR-11500, 1500t crawler with 38,900tm and Manitowoc M-2000-R, 2000t Ringer with 49,605tm. And the winner was... Demag CC-11600, later renamed CC-12600.

DID YOU KNOW?

152m MAIN BOOM

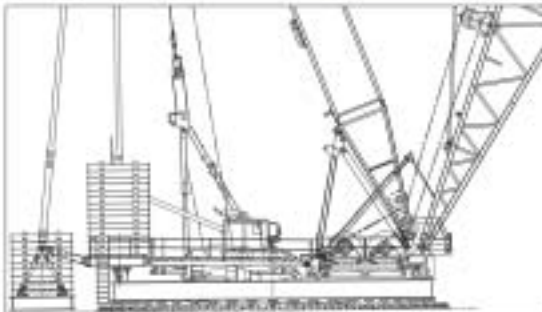
Although the Rambiz was erected with 82m main booms their length could vary between 68 and 152m, the longest in the business. A luffing jib was also possible in the combination 100 main boom plus 102 luffing.



Platform TwinRing HD



StoTra 55G-50



Maniowoc M-1200-R MAX-ER



Maniowoc M-1200-R MAX-ER



Platform TwinRing HD



MSG-50

CRANE INNOVATIONS

1997	LARGEST RINGER Platform TwinRing HD (2000t / 47600tm). World's largest ringer crane. 2000t platform ring using an A-frame consisting of main boom sections and a luffing jib. Crane can be moved fully rigged using SPMTs. Later renamed PT-50.	2000t RINGER
1997	SLIDING GANTRY StoTra 55G-50 (3600t / 56500tm). Multi purpose sliding gantry using A-frame main boom. All parts are containerized. Equipped with skidshoes and strandjacks. StoTra would become 100% Mammoet in 1998 and the gantry renamed MSG-50.	3600t SLIDING GANTRY
1998	RINGER WITH RUCKSACK Maniowoc M-1200-R MAX-ER (1300t / 27700 tm). Additional 385t suspended counterweight with 15.6m tailswing increasing maximum load moment with 16%.	1300t RINGER WITH SL
1998	SLIDING GANTRY WITH JIB MSG-50 (3600t / 56500tm). Fixed single jib for MSG-50.	3600t SLIDING GANTRY



EQUIPMENT INNOVATION

2000t TAILFRAME

Containerized tailframe with a maximum capacity of 2000t.

SKIDDING INNOVATION

SKID-SHOES

Hydraulic skidshoes with a capacity of 600t. The shoes are equipped with jacks to pick-up/set-down the load. Push-pull units move the jacks along the tracks.



DID YOU KNOW?

MECCANO FOR BIG BOYS

The Twin Ring concept was the start of a whole new range of possible ringer cranes. A 21.5m diameter ring was the base for many concept studies like the SUPER TwinRing LD, Marine Mobile Ringer Crane, the MMRC-50000, etc.

DID YOU KNOW?

NOT STRONG ENOUGH

For the installation of a 1200t FPSO living quarter at Clydebank, the yard's Demag CC-12000 was not capable of doing the job. Hence the Demag CC-12600 was mobilized to perform this record lift.



Platform TwinRing Containerized (PTC)



Demag AC-650



Spit



Mammoet: "WHO'S NEXT"



Van Seumeren: "THE NEXT GENERATION"

CRANE INNOVATIONS

1999	PLATFORM TWINRING CONTAINERIZED Platform TwinRing Containerized (1600-2000t / 33500tm). (In short: PTC). Platform ring crane using A-frame and double jib. The ring ballast can be suspended like a Super-Lift. During transport all components are containerized. Crane can be relocated fully rigged using crawler sets or SPMTs. Later renamed to PTC-35.	1600/2000t RINGER
1999	LARGEST TOWER IN THE WORLD Kroll K-10000 (240t / 10000tm). Largest tower crane in the world with a capacity of 240t at 80m radius.	240t TOWER
1999	RAIL TRANSPORT SOLUTION FOR THE CC-4800 To obtain a permit for rail transport the 4m wide upperworks of a Demag CC-4800 were rolled 90 degrees using a "Spit".	SPIT
1999	LARGEST TELESCOPIC ROADABLE WITH MAIN BOOM Demag AC-650 (650t / 2124tm). Largest telescopic all-terrain crane that can travel with a complete 60m main boom. Maximum 160t ballast and 96m luffing jib.	650t TELESCOPIC ALL-TERRAIN

SERVICE INNOVATION

2000: VAN SEUMEREN+MAMMOET

Van Seumeren acquires Mammoet.

VAN SEUMEREN



MAMMOET

DID YOU KNOW?

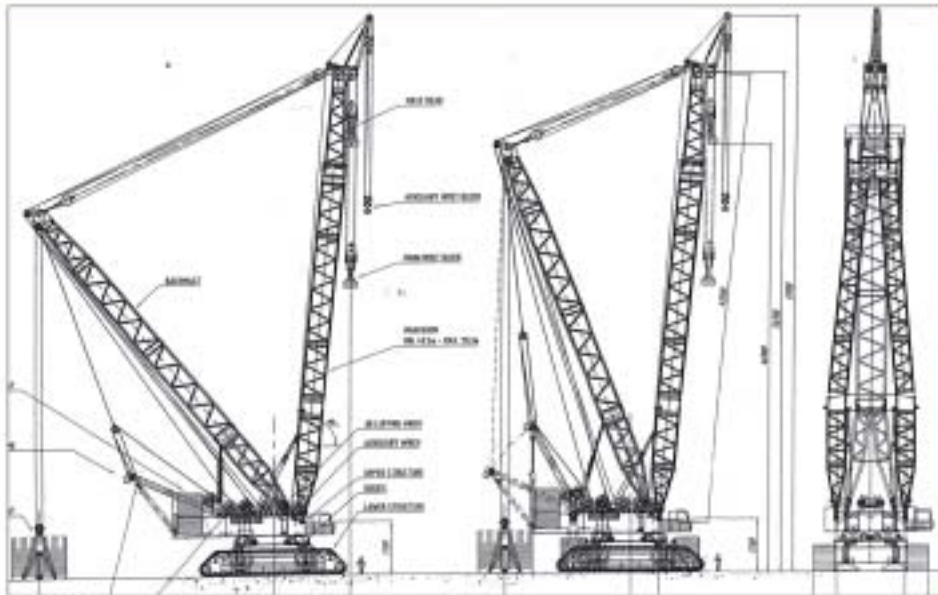
26 TONNES OF BOLTS

According to manufacturer Kroll it would take 6 months to rig a K-10000. Van Seumeren managed to erect this levathan in only 3 months using a Demag CC-4800 and two Manitowoc M-250-W's. The number of bolts was countless, but the rigging crew did remember the total weight of the bolts was "only" 26t. They all had to be torqued.

DID YOU KNOW?

WHAT'S IN A NAME

It can not be denied: Mammoet is an excellent name for a Heavy Lift & Transport company. Hence, the new company (van Seumeren) was known as...Mammoet. To "ease" the pain all equipment received the red and black Van Seumeren colours.



CCC-1250



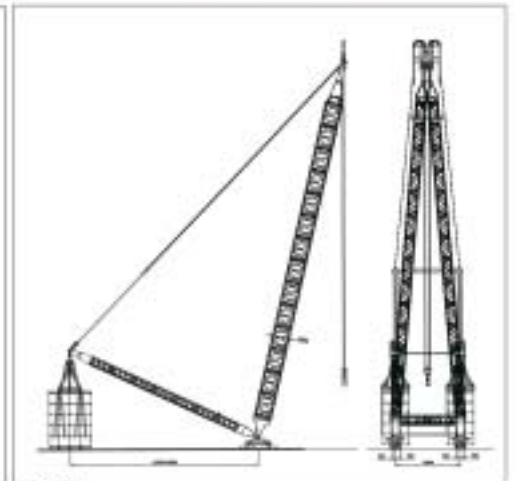
Jumping Jack



Zephyros



MSG-100



MSG-100

CRANE INNOVATIONS

2001	CONTAINERIZED WINDMILL LIFTING DERRICK Derrick fitted on top of windmills to lift turbine and wings. Named after the Greek God of the west wind.	"ZEPHYROS"
2001	PTC/MSG CRANE MAST PTC-MSG CM (3000t). Concept study: Crane mast for PTC. Similar to VSCM in 1994. Based on PTC with MSG support tower with a capacity of 3000t. All parts, including the gantry beam, are containerized.	3000t GANTRY
2001	CONTAINERIZED CRAWLER CRANE CCC-1250 (1250t / 22000tm). Concept Study: 1250t containerized crawler crane to compete with Demag CC-8800.	1250t CRAWLER
2002	LARGEST SLIDING GANTRY MSG-100 (4400t / 100000 tm). Concept study: two MSG-50s combined to one MSG-100.	4400t SLIDING GANTRY
2002	JUMPING JACK Jack-up barge for windmill installation, equipped with a 1300t Manitowoc M-1200-R. The crane was installed on a frame that could be loaded-out/in by SMPT trailers.	TEMP

MARITIME INNOVATION

HEAVE COMPENSATION

For the salvage of the Russian submarine Kursk, a heave compensation system for lifting with 26 strandjacks was developed and used.



MARITIME INNOVATION

UNDERWATER SAW

For the salvage of the Russian submarine Kursk an underwater saw was developed, designed and used to remove the heavily damaged bow section.



DID YOU KNOW?

4 OUT OF 5

Düsseldorf, Germany based Gotwald is considered one of the most innovative crane manufacturers. One of their latest creations was the AK- and RG-912, a 900/1200t lattice boom crane. Over the years Mammoet had 4 (out of the 5) 912s in their fleet, including the one owned by Walbr Wright.

DID YOU KNOW?

BOLLARD

"The Bollard", the new main office of Mammoet in Schiedam, was built pre-assembled at the Heerema fabrication yard in Zwijndrecht. The load-out, water transport, load-in and subsequent installation was performed by, you guessed it, Mammoet!



4100-W Portal Ringer



RK-8500



Demag CC-4800



Gottwald RG-912-GT-1

CRANE INNOVATIONS

2003	PORTAL RINGER ON CRAWLERS Manitowoc 4100-W Ringer (320t / 3000tm). Ringer cranes installed on a mobile portal, equipped with crawlers, for a salvage job in South Africa.	320t PORTAL RINGER
2003	UPGRADE FAMOUS CRAWLER Gottwald RG-912-GT-1 (900-1200t / 15800tm). Upgrade of the RG-912-GT crawler/pedestal crane, one of only two built by this German manufacturer.	1200t CRAWLER
2004	SERIOUS SPARE CAPACITY RK-8500 (1250t / 20400tm). Demag CC-4800 upgraded to CC-8800 specifications. The upperworks were splitted in a front and rear part for easy transport.	1250t CRAWLER

JACKING INNOVATION

PUSH UP

2400t containerized jacking towers with a combined capacity of 38400t.



TRANSPORT INNOVATION

SPMT 3

Self Propelled Modular Transporter. The third generation of the SPMT features increased payload.



DID YOU KNOW?

DO THEY GLOW?

With the acquisition of 2 more CC-4800s, the total number of CC-4000/4800s which were part of the Van Seumans/Mammoet fleet topped 10. Now they included all 5 CC-4000s that were once built for the Russian Nuclear Powerplants. Two of these were used at Chernobyl. And no...they do not glow in the dark (anymore).

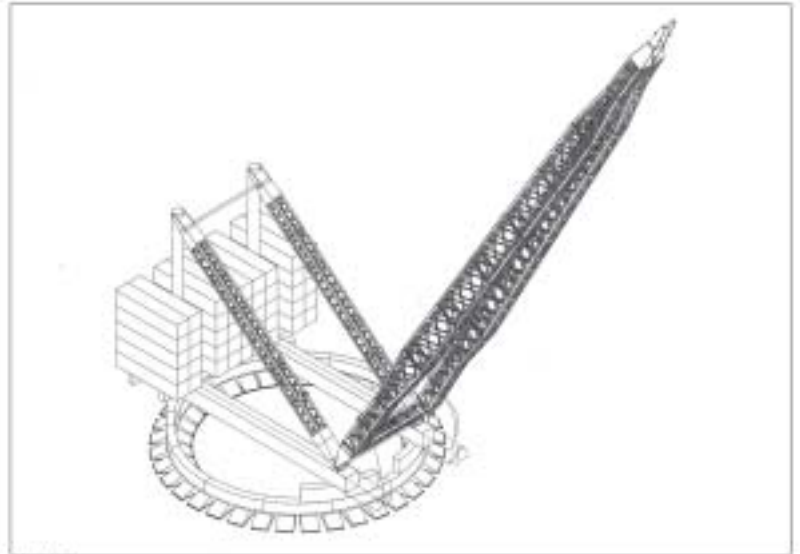
DID YOU KNOW?

MINUS 50

The first Demag CC-4800s started life as a CC-4000 in SWSL mode, 60% stronger than the original CC-4000. The CC-4000 SWSL was designed to work at temperatures up to minus 50 degrees Celsius.



MSG-60



Big Beast



PTC-35-DS

CRANE INNOVATIONS

2005	DOUBLE STACKED PTC Platform TwinRing Containerized (1600-2000t / 33500tm) with DS (double stacked) main boom and increased ballast. A lot more capacity at radius. Later renamed PTC-35-DS.	1600/2000t RINGER DS
2005	UPGRADED SLIDING GANTRY MSG-80 (3600t / 75200tm). Upgraded and modernized MSG-50.	3600t SLIDING GANTRY
2006	BIG BEAST 3200t / 120000tm. Concept Study: first ideas for new super heavy lift cranes.	3200t RINGER



WINCH INNOVATION

CWS

Containerized Winch System. 20' container with winch and powerpack. Can be mounted on top of gantry. Each unit has a maximum capacity of 650t.

MARITIME INNOVATION

DWRS

Deep Water Recovery System. Remote operated excavators on the sea bed for the salvage of an aluminium shipment. The ship was named "Runner 4"



DID YOU KNOW?

PROUD TO BE DUTCH

Although it's a small country, Holland has always been the base of many world wide operating heavy lift & transport contractors. Moreover Van Twil, Stooft and Van Seumeren were all located within a circle with a radius of only 30km.

DID YOU KNOW?

D.I.Y.

With an almost constant demand for bigger cranes the "big boys" in the market are now designing and building their own cranes. This also happened 65 years ago when surplus war vehicles were converted into lifting equipment.



Demag CC-8800-1



Liebherr LR-11350



Liebherr LR-11200



Liebherr LTM-11200-9.1



Liebherr LTM-11200-9.1

CRANE INNOVATIONS

2007	NEW GENERATION CRAWLERS Demag CC-8800-1 (1600t / 24000tm). Latest large crawler crane from Terex-Demag.	1600t CRAWLER
2007	NEW GENERATION CRAWLERS Liebherr LR-11350 (1350t / 22750tm). Latest large crawler crane from Liebherr. Mammoet owns 4.	1350t CRAWLER
2007	HIGH REACH Liebherr LR-11200 (1200t / 20900tm). With a capacity of 1000t at 18m radius and a maximum combined boom length of 224m. Mammoet owns both LR-11200s ever built.	1200t CRAWLER
2008	LARGEST GANTRY MSG-120 (3200t / 120000tm). Concept study: MSG-120 with DS (double stacked) main boom.	3200t SLIDING GANTRY DS
2008	LARGEST TELESCOPIC IN THE WORLD Liebherr LTM-11200-9.1 (1200t / 3320tm). Largest telescopic crane in the world. 1200t and equipped with 100m removable main boom and 126m luffing jib. Mammoet owns 3.	1200t TELESCOPIC



SALVAGE INNOVATION

CHAIN-PULLER

8x 300t chain-pull system, used for e.g. salvage of shipwrecks.

MARITIME INNOVATION

FSC

Concept Study: FSC-HD-2000, Floating Sheerlegs Containerized. 2000t floating sheerlegs with containerized boom.



DID YOU KNOW?

PREFERENCES

In the 70s, 80s and 90s Mammoet invested mainly in Manitowoc Ringier cranes, while Van Seumeren preferred Demag Super-Lifters. Interestingly enough the Demag TC-2500 and TC-3000 had a Ring-Lift option.

DID YOU KNOW?

STILL GOING STRONG

Although almost 40 years of age, the Gottwald MK-550s of Stoot and Van Seumeren are still being used. Several owners later they still do their thing in China and Morocco.



MSG-80



MSG-80



Demag AC-700



PTC-35



PTC-35

CRANE INNOVATIONS

2009	DOUBLE STACKED MSG MSG-80 (3600t / 75200tm). Double stacked main boom for MSG-80 with DS (double stacked) main boom and increased ballast, providing much more capacity at radius.	3600t SLIDING GANTRY DS
2009	LARGEST TELESCOPIC ROADABLE WITH MAIN BOOM Demag AC-700 (700t / 2544tm). Largest telescopic all-terrain crane that can travel with complete 60m main boom. Maximum 160t ballast and 96m luffing jib. Mammoet owns 3.	700t TELESCOPIC ALL-TERRAIN
2010	PTC ON BARGE PTC-35 on Mammoet barge M331 in Port Klang, Malaysia.	1600/2000t RINGER



JACKING INNOVATION

JS-500

Jacking System 500. Very compact 500t push-up System.

MARITIME INNOVATION

MPP

Multi Purpose Ponton "De Scheide" with integrated winch and ballasting system, for vessel launching.



DID YOU KNOW?

MINE IS BIGGER

One of the most interesting discussions is about the maximum crane capacity. To compare cranes, type of crane and (maximum) loadmoment is more realistic.

DID YOU KNOW?

NOT BAD

100 and 1000 have always been magical numbers. E.g. what a crane can lift at 100m radius. In 1983 a Manitowoc M-1200-R did 88t, while the latest PTC-200-DS does 1390t: not bad.



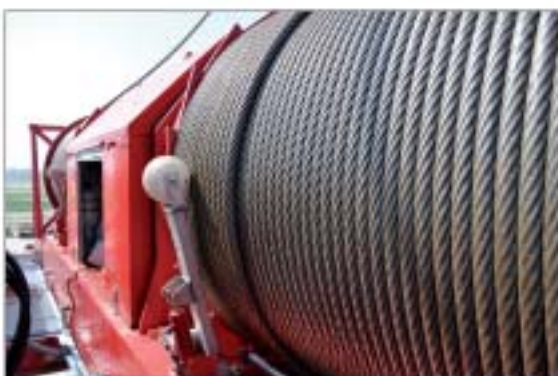
CRANE INNOVATIONS

2011

NEW GENERATION SUPER PTCs

3200t RINGER DS

New generation PTCs. Super Heavy Lift ring cranes, capable of lifting up to 1300t at 100m radius. Double stacked mainboom, boogies, winches, smallest footprint and non-stop interpolation are some of the features.



DID YOU KNOW?

IN-HOUSE ENGINEERING

The new super heavy PTCs were completely developed and engineered by Mammoet. The design is based on 45 years of large crane experience.

DID YOU KNOW?

NEW TERMINAL

The lack of space to assemble and test the 3 new super heavy PTC cranes resulted in the new 80000 m2 Wealdorpe area. This area is an extension to the existing Mammoet Heavy Lift Terminal.



MAMMOET
www.mammoet.com